

BETON C35/45 W8
STAL ZBRÓJENIOWA BS500S

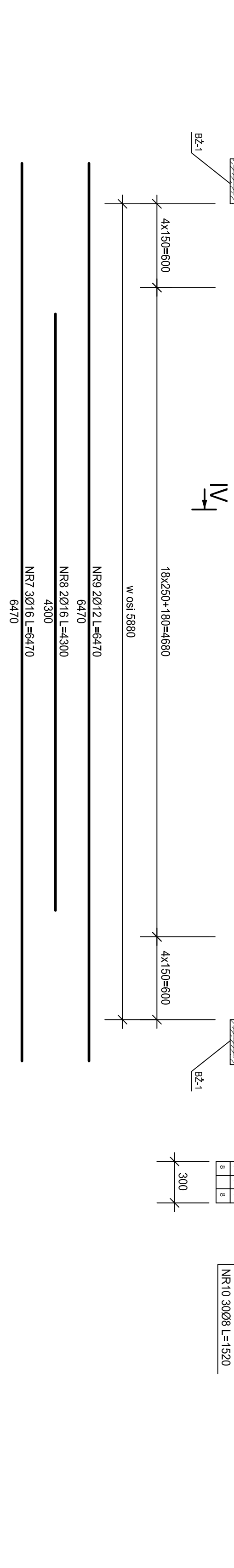
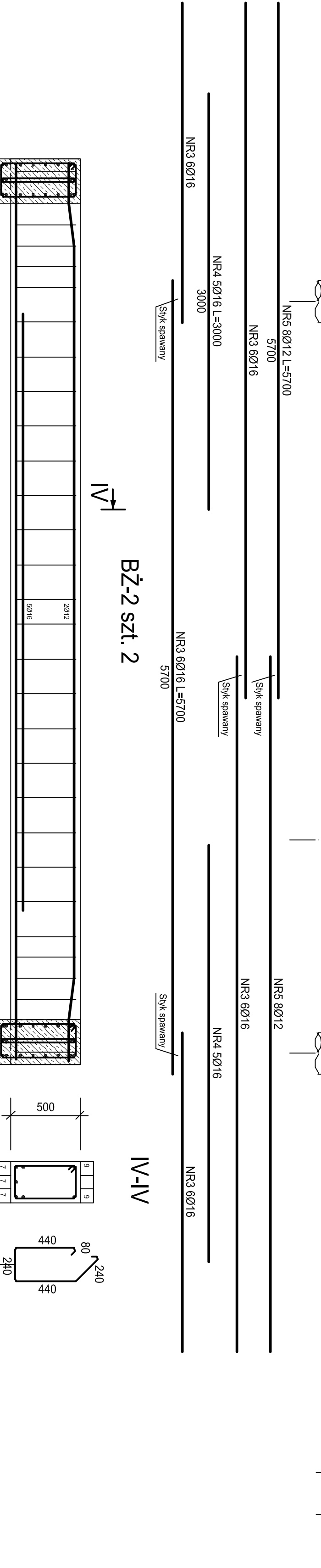
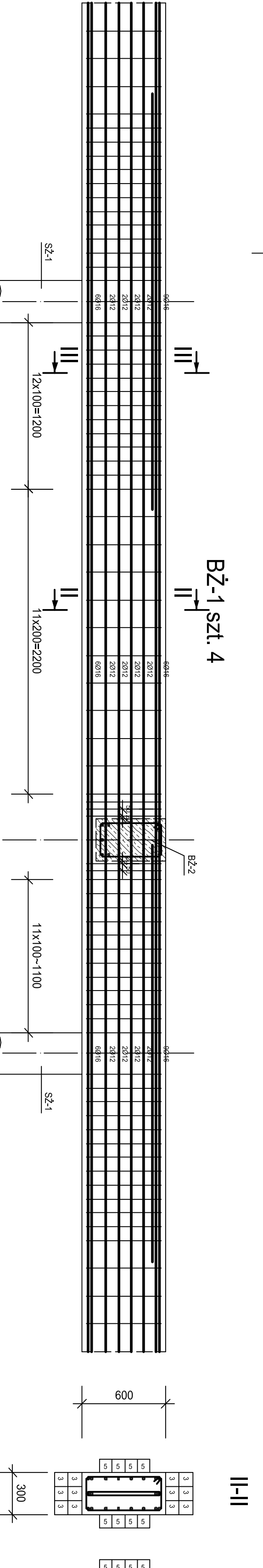
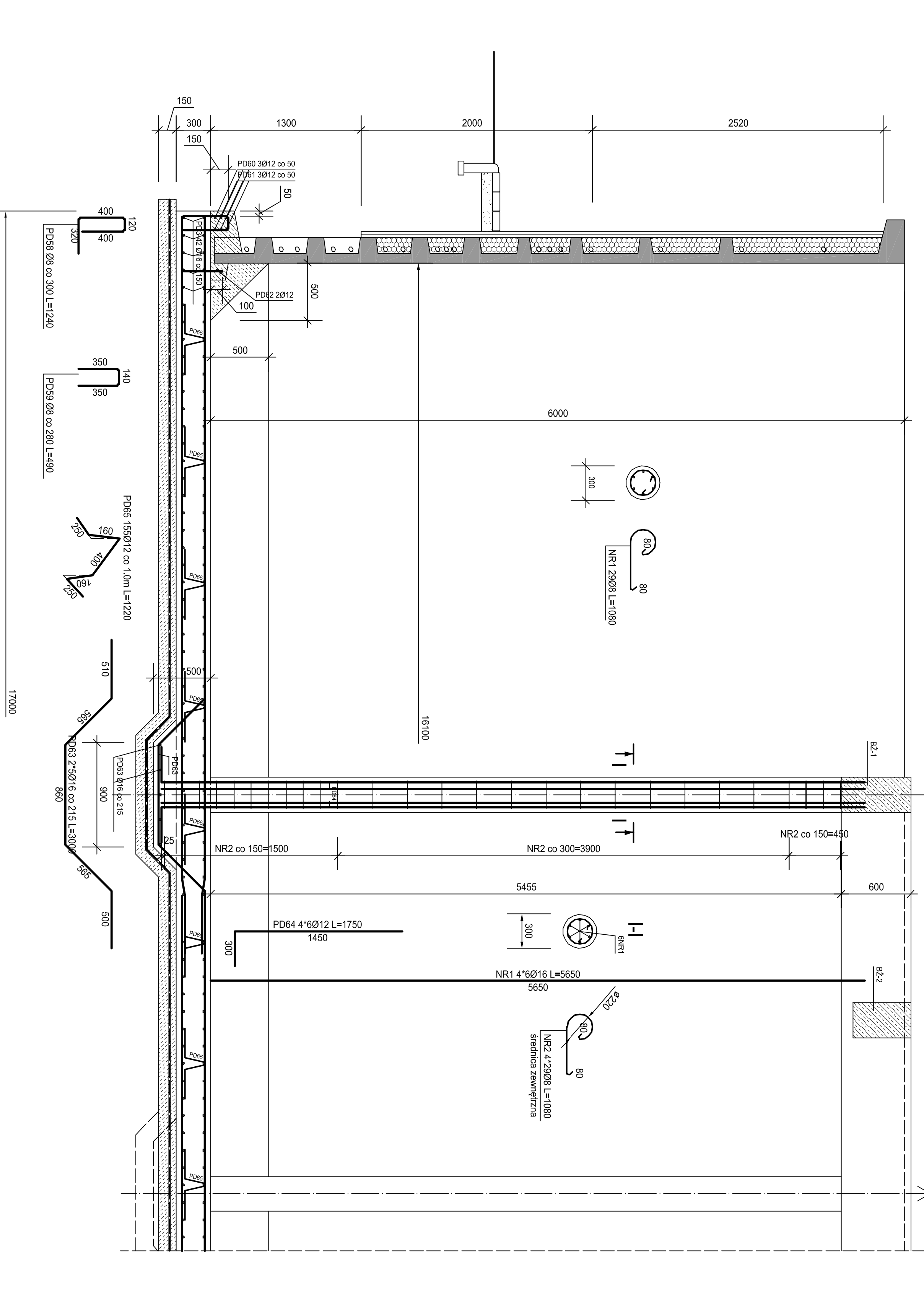
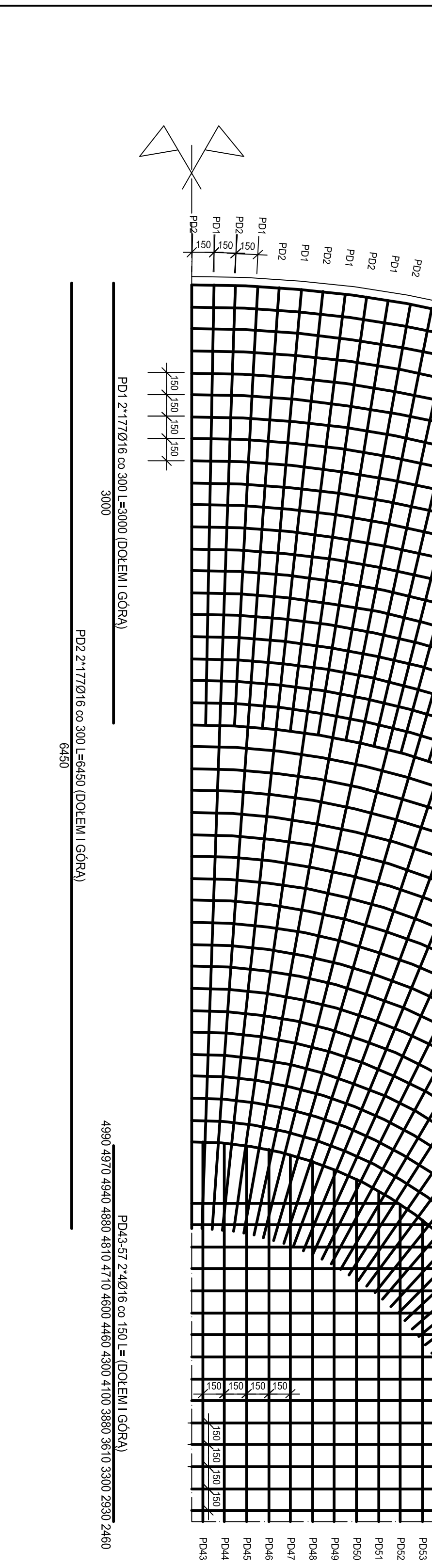
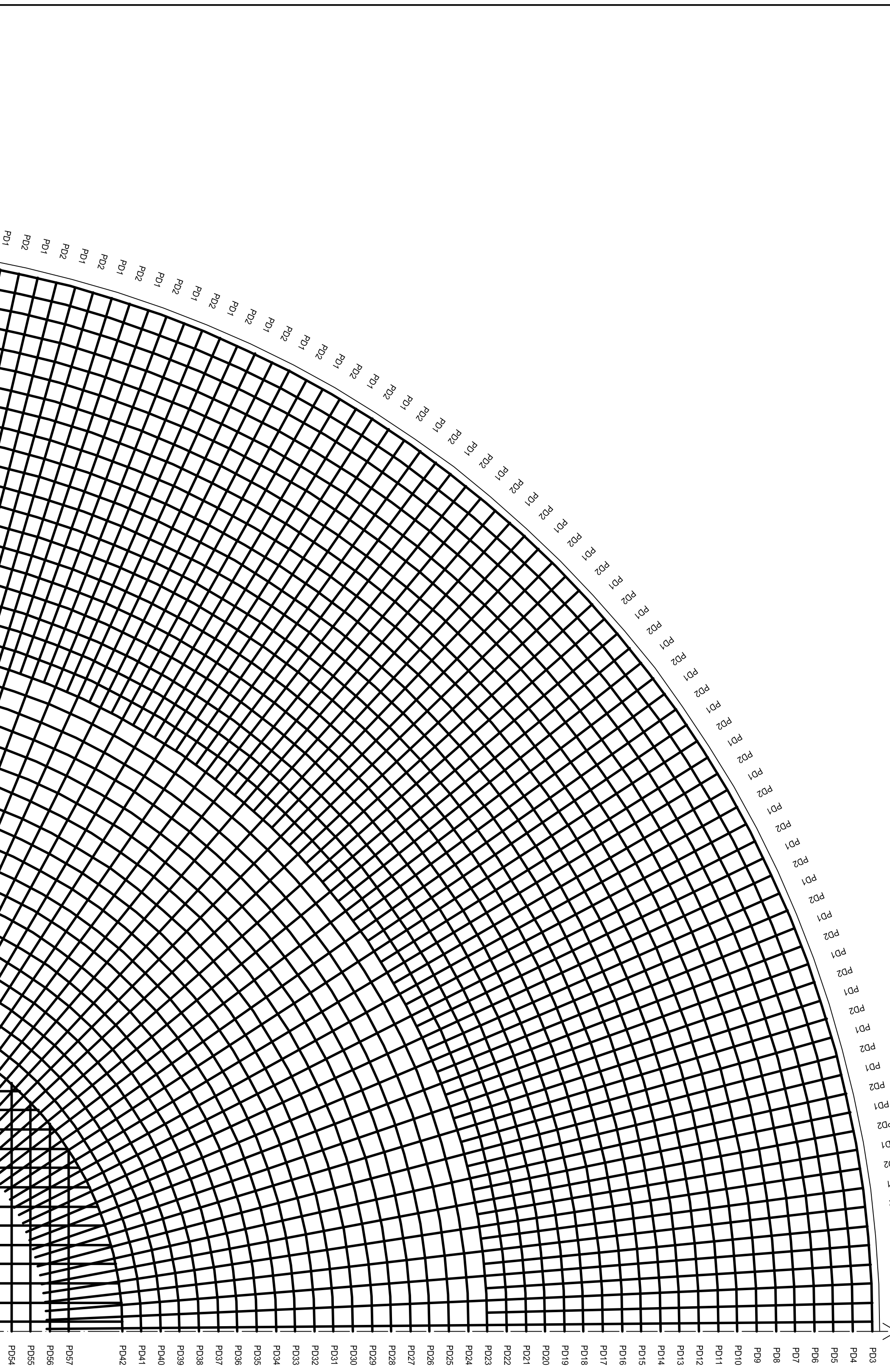


Table with columns: Nr, P, Gęstość pętli, m, k, and Ciężar własny. It lists reinforcement details for various grid lines.

Table with columns: Nr, P, Gęstość pętli, m, k, and Ciężar własny. It lists reinforcement details for various grid lines.

ESKO CONSULTING logo and contact information. Address: ul. Kolejowa 17, 02-247 Warszawa, Poland. Phone: +48 22 629 11 71, Fax: +48 22 629 11 72. Website: www.eskoconsulting.com.pl. Includes a disclaimer and terms of service.